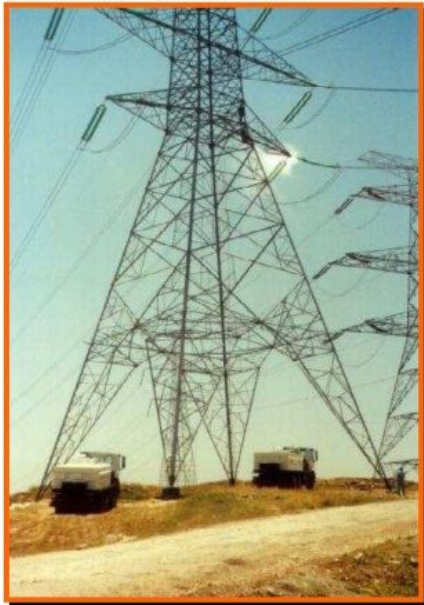


# IW-SD Series

## INSULATOR WASHERS - SKID & TRUCK MOUNTS



**THE CHANCE LIVE LINE INSULATOR WASHER SKID & TRUCK MOUNT SERIES can be fitted to all makes of truck either in factory or in the country of use.**



### LIVE LINE WASHING UP TO 500kV

All units comply with the IEEE-957 International Standards.

The standard range of IW-SD Skid and Truck Mounted Live Line Insulator Washers has capacities from 2000 to 10000 litres with optional capacities up to 18000 litres.

This type of insulator washer consists of a completely integrated unit that can be mounted and demounted from the truck chassis as required, freeing the truck for other duties.

The heavy duty, robust full-length steel channel frame assembly is fitted with removable lifting eyes to facilitate easy mount and de-mount. The water tanks are manufactured from high grade stainless steel.

The Insulator Washer power source consists of a diesel engine, 115HP (86KW) at 2'500 rpm , with 12 volt starter motor, fuel tank, fuel filter, oil filters, fuel primer, heavy duty radiator, alternator, batteries, silencer, full engine cowling and solenoid operated automatic throttle.

The Insulator Washer Water Pump is a 4 stage High Pressure centrifugal pump with outboard bearing, balanced impellers and replaceable wear rings. Pump rated at 230 litres per minute at 1,000 psi (68bar).



- ◆ Translink "plug and go" removable instrument panel with quick disconnect weather-tight sockets allows for easy replacement of damaged parts or service works. Instruments include:
- ◆ high pressure water gauge;
- ◆ tachometer and hours run meter;
- ◆ oil pressure, water temperature; fuel gauges;
- ◆ voltmeter; circuit breakers;
- ◆ constant conductivity monitor and set points;
- ◆ key switch and swichgag control;
- ◆ constant water flow indicator & battery indicator

**SIMPLY RELIABLE**



# IW-SD Series

## INSULATOR WASHER - SKID & TRUCK MOUNTS



Fixed pre-settable conductivity meter with alarm for constant monitoring of the tank's water conductivity



Optional portable conductivity meter to test water prior to filling the tank, with 3.5m of cable and heavy duty probe.



Optional heavy duty manual rewind 26m long grounding cable drum with earth clamps.



Optional electric rewind hose-reel (50m) with quick release connectors and hose guide.



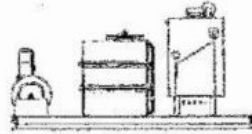
All skid units can also be supplied in combination with booms from 14m to 44m heights to wash up to 52m heights.

### SPECIFICATIONS

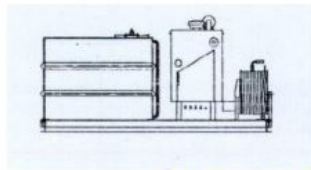
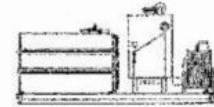
**Water Flow: 230LPM (62GPM – US)**  
**Pump Pressure: 1000PSI (68 Bar)**



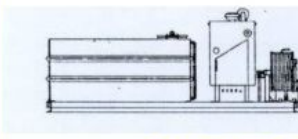
**IW-SD 2240 LITRE SKID**



**IW-SD 4000 LITRE SKID**



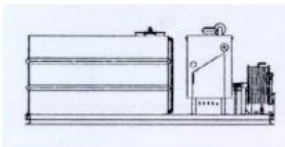
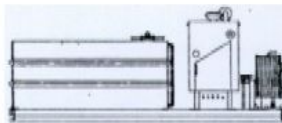
**IW-SD 4700 LITRE SKID**



**IW-SD 6500 LITRE SKID**



**IW-SD 8500 LITRE SKID**



**IW-SD 10000 LITRE SKID**



### Rewind Hose Reels



2 manual rewind hose reels with 50m of 1" insulated heavy duty wash hose are fitted as standard (electric rewind; single reel and auxiliary outlet -optional)

### Heavy Duty Stainless Steel Wash Guns



High-pressure stainless steel wash guns with 'dead man' type trigger control, QRC, flow straightener and 1/4 inch nozzle. For high wind conditions, wash guns with 5/16 inch nozzles are available. Pressure gauge and 3m fly hose are optional. All parts interchangeable.

**TRANSLINK International Sales Ltd.,**

**The Pigpen, Mill Farm, Farlow, Kidderminster, Worcestershire, DY14 0LP. UK**

**Tel : +44 (0)1746 718 740 Fax : +44 (0) 1746 718 540**

**E-mail: [translink-international@dial.pipex.com](mailto:translink-international@dial.pipex.com)**

**[www.translink-international.com](http://www.translink-international.com)**